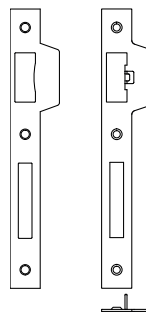
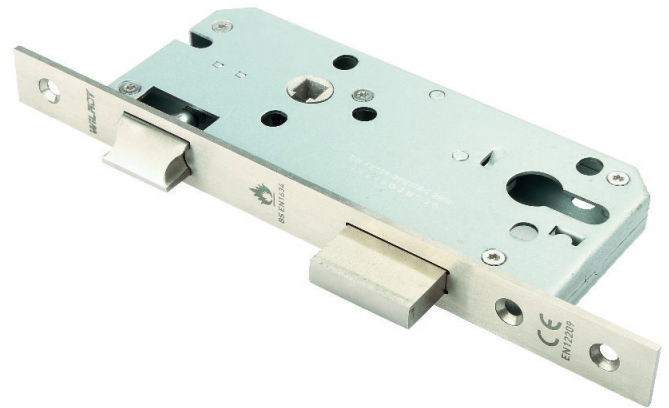


Application

- European DIN style casing designed for use with Euro profile cylinders.
- Bolt-through fixing holes for security handles and roses.
- SECC galvanized steel lockcase assembled with stainless steel 304 Torx screws.
- Heavily sprung latch follower made from stainless steel 304 allowing the use of heavy unsprung door furniture.
- Latch follower equipped with spindle grip feature that reduces door rattle.
- Double throw deadbolt made from stainless steel 304 extending 20.5 mm when key is turned twice.
- Easily reversible latch made from stainless steel 304 allows quick on-site handing.
- Forend made from 3 mm thick stainless steel 304, available in 20/22/24 mm widths with straight or rounded corners (specify size and type).
- Cylinder-to-latch functionality.
- Supplied with clear plastic splinter guard for improved esthetics (white or black available upon request).
- Supplied with strike plate made from stainless steel 304 (specify type).
- Supplied with grade 304 stainless steel fixing screws for timber doors (metal door screws available upon request).



CE Classification

3X910G3BC20



Operation

From the inside:

- Latch withdrawn by lever handle/knob.
- Deadbolt operated by cylinder key/thumbturn.
- Latch retracted on a second turn of the cylinder.

From the outside:

- Latch withdrawn by lever handle/knob.
- Deadbolt operated by cylinder key/thumbturn.
- Latch retracted on a second turn of the cylinder.

Specification

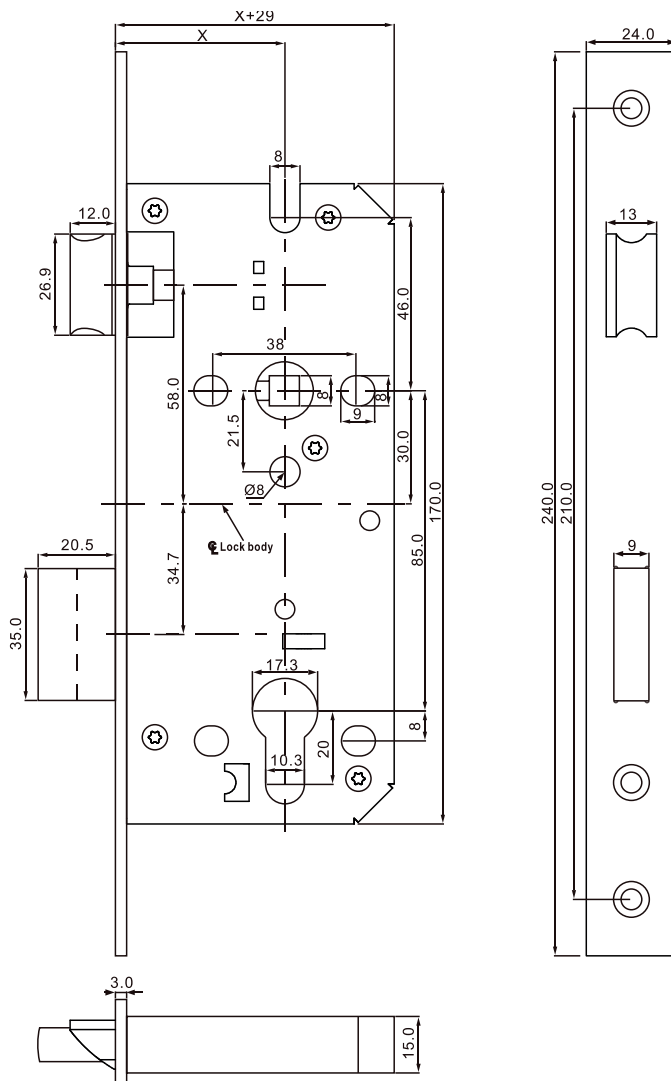
Center Distance	85 mm
Backset Size	45/50/55/60 mm
Follower	8 x 8 mm
Follower Material	Stainless Steel 304
Deadbolt	20.5 mm double throw
Deadbolt Material	Stainless Steel 304
Latch Type	Reversible Latch
Latch Material	Stainless Steel 304
Lockcase Thickness	15 mm
Lockcase Material	SECC Galvanized Steel
Forend Length	240 mm
Forend	20/22/24 mm with straight or round corners
Forend Thickness	3 mm
Forend Material	Stainless steel 304
Strike Plate Thickness	1.5 mm
Strike Plate Material	Stainless Steel 304
Packaging	20 Units per Carton

Certification

- 10 year warranty: The performance of this product and all its variants is covered by Wilroy's hassle-free warranty.
- CE marked and fully tested to EN 12209:2003.
- CE marked and fully tested to EN 1634-1:2014 for suitability of use on fire doors.
- Fully compliant with DIN 18251.

Digit	Grade	Description
1 st	3	Designed for use by the public where there is little incentive to exercise care and where there is a high chance of misuse. This is the highest possible grade according to EN 12209:2003 standards.
2 nd	X	Passed 200,000 test cycles with a 120 N force applied to the latch bolt while it is being withdrawn. This is the highest possible grade according to EN 12209:2003 standards.
3 rd	9	Designed for doors with mass above 200 kg and closes with a force of 15 N from a standing start. This is the highest possible grade according to EN 12209:2003 standards.
4 th	1	Suitable and approved for use on fire/smoke door assemblies. Tested according to EN 1634-1:2014 standards, and achieved fire resistance of 260 minutes on steel fire doors and 111 minutes on timber fire doors.
6 th	G	Very high corrosion resistance (240 hours NSS salt spray testing) satisfying the temperature requirement from -10 °C to +60 °C. This is the highest possible grade according to EN 12209:2003 standards.

Technical Design



Finishes

- AB - Antique Brass
- AC - Antique Copper
- BP - Matted Black
- GM - Gun Metal
- PB - Polished Brass
- PN - Polished Nickel
- PS - Polished Stainless Steel
- RG - Rose Gold
- SB - Satin Brass
- SN - Satin Nickel
- SS - Satin Stainless Steel

FPS85			
Catalog Part#	Backset (mm)	Lockcase Depth (mm)	Forend
FPS854520C	45	74	20 mm with Round Corners
FPS854520D	45	74	20 mm with Straight Corners
FPS854522C	45	74	22 mm with Round Corners
FPS854522D	45	74	22 mm with Straight Corners
FPS854524C	45	74	24 mm with Round Corners
FPS854524D	45	74	24 mm with Straight Corners
FPS855020C	50	79	20 mm with Round Corners
FPS855020D	50	79	20 mm with Straight Corners
FPS855022C	50	79	22 mm with Round Corners
FPS855022D	50	79	22 mm with Straight Corners
FPS855024C	50	79	24 mm with Round Corners
FPS855024D	50	79	24 mm with Straight Corners
FPS855520C	55	84	20 mm with Round Corners
FPS855520D	55	84	20 mm with Straight Corners
FPS855522C	55	84	22 mm with Round Corners
FPS855522D	55	84	22 mm with Straight Corners
FPS855524C	55	84	24 mm with Round Corners
FPS855524D	55	84	24 mm with Straight Corners
FPS856020C	60	89	20 mm with Round Corners
FPS856020D	60	89	20 mm with Straight Corners
FPS856022C	60	89	22 mm with Round Corners
FPS856022D	60	89	22 mm with Straight Corners
FPS856024C	60	89	24 mm with Round Corners
FPS856024D	60	89	24 mm with Straight Corners